

# HairContouring

using X-TENSO®



HairContouring is a brand new way of looking at hot texture services, straight or curl.

Now you can customise a texture service according to your clients' needs and preferences.

Essentially, it contours the hair using X-Tenso® to achieve a contouring effect on the face.

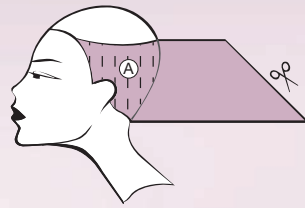
Depending on the style (straight or curl) and technique chosen, one will either achieve a more or a less visible face area.

**Conceal Technique = Less Visible Face Area**

**Reveal Technique = More Visible Face Area**



## HAIR CUT technique



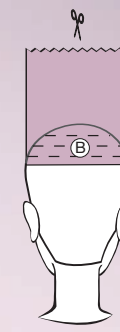
1. Take a horizontal section on Zone A  
• Slicing technique



2. Vertical / pivotal parting



3. Section Zone B vertically at 90° using slicing layered cutting



4. Cross check on Zone B

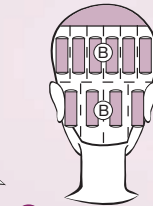


5. Section Zone C to a 45° using forward layered slicing technique

## CONTOURCURL conceal FOR A SLIMMER FACE SHAPE



- 1 Section hair into Zone A and B

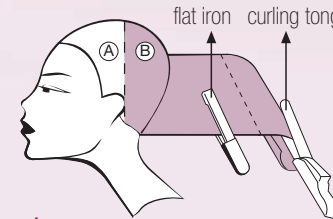


- 2 After applying X-Tenso® on entire hair, wind rods **inwards** vertically on entire Zone B



- 3 On Zone A, position rods at 45°. Thickness at about max. 2 inches. Rods should be wound **inwards**

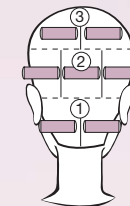
## CONTOURSTRAIGHT conceal FOR A SLIMMER FACE SHAPE



- 1 Section hair into Zone A and B, after applying X-Tenso® on entire hair, proceed to ironing

When using flat iron, the motion and tension should start upwards at roots, moving **closer** to face at the midlength and curling inwards at ends, to give root volume and 'slender' effect

For both zone A and B, use flat iron for roots to ends. After which, use curling tong to wind 1 round inwards at ONLY hair ends



- 2 Proceed to neutralizing on entire hair  
After applying X-Tenso® Neutralizer, divide Zone B into 3 sub-sections

Use rod size of min. 26 mm on hair ends, wind inwards all the way to 1-2 inches before reaching hair roots

Use 2 rods in section B1, 3 rods in B2 and 2 rods in B3

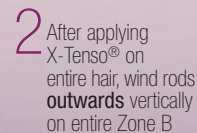


- 3 On Zone A, wind rods at 45° inwards near to hair roots

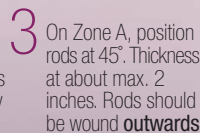
## CONTOURCURL reveal FOR A MORE BALANCED FACE SHAPE



- 1 Section hair into Zone A and B



- 2 After applying X-Tenso® on entire hair, wind rods **outwards** vertically on entire Zone B



- 3 On Zone A, position rods at 45°. Thickness at about max. 2 inches. Rods should be wound **outwards**

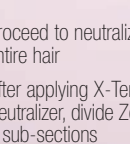
## CONTOURSTRAIGHT reveal FOR A MORE BALANCED FACE SHAPE



- 1 Section hair into Zone A and B, after applying X-Tenso® on entire hair, proceed to ironing

When using flat iron, the motion and tension should start upwards at roots, moving **away** from face at the midlength and curling inwards at ends, to give root volume and 'full' effect

For both zone A and B, use flat iron for roots to ends. After which, use curling tong to wind 1 round inwards at ONLY hair ends



- 2 Proceed to neutralizing on entire hair  
After applying X-Tenso® Neutralizer, divide Zone B into 3 sub-sections

Use rod size of min. 26 mm on hair ends, wind inwards all the way to 1-2 inches before reaching hair roots

Use 2 rods in section B1, 3 rods in B2 and 2 rods in B3



- 3 On Zone A, wind rods at 45° inwards near to hair roots

Contour your hair for your Brand New Look!

# HairContouring

美发塑型 烫发服务

采用 X-TENSO®



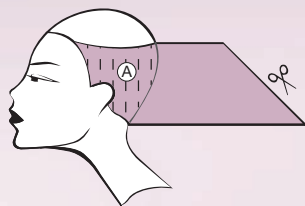
美发塑型烫发服务是将高温直或卷烫的概念推陈出新。如今您能为您的顾客量身订造该项服务以满足她们的需求及喜好。

基本上，美发塑型烫发服务利用X-Tenso®为您的顾客塑造柔顺发型，营造完美轮廓。按照不同的发型（直或卷）及所采用的技巧能遮盖或显露顾客脸部轮廓。

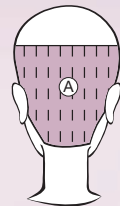
遮盖技巧 = 让脸部变窄  
显露技巧 = 让脸部加宽



## 裁剪 技巧



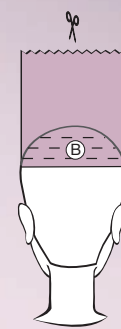
1. 在A区取发束以建立水平分区  
滑剪技巧



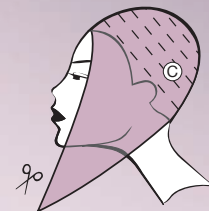
2. 垂直 / 定点划分



3. 在区部B呈90度垂直滑剪削薄



4. 在区部B十字交叉剪



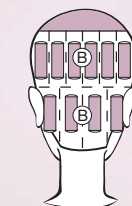
5. 在区部C呈45度向前滑剪削薄

## CONTOURCURL 遮盖

让脸部显得纤瘦



1 将头发分为A及B区



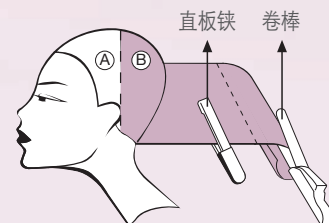
2 全头涂上X-Tenso®, 在区部B用卷杠向内垂直卷



3 在区部A用卷杠呈45度向内卷; 不超过2寸的厚度

## CONTOURSTRAIGHT 遮盖

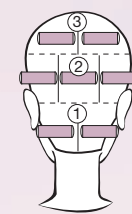
让脸部显得纤瘦



1 将头发分为A及B区, 在全头涂上X-Tenso®后, 进行直烫

当使用直板铁时, 确保从发根向上夹。到了发段, 靠近脸庞。到了发尾, 向内卷, 以达到发根具密度及让秀发贴脸

在区部A及B由发根至发尾都使用直板铁。接着, 只在发尾使用卷棒向内卷1圈



2 在全头施放X-Tenso®中和剂后, 将区部B划分为3个小区部

用不小过26毫米的卷杠向内卷至离发根1-2寸之间

区部B1使用2个卷杠, B2用3个, B3则2个



3 在区部A用卷杠呈45度向内卷至接近发根

## CONTOURCURL 显露

让脸部显得更平衡

1 将头发分为A及B区

2 全头涂上X-Tenso®, 在区部B用卷杠向外垂直卷

3 在区部A用卷杠呈45度向外卷; 不超过2寸的厚度

## CONTOURSTRAIGHT 显露

让脸部显得更平衡

1 将头发分为A及B区, 在全头涂上X-Tenso®后, 进行直烫

当使用直板铁时, 确保从发根向上夹。到了发段, 远离脸庞。到了发尾, 向内卷, 以达到发根具密度及让秀发丰盈

在区部A及B由发根至发尾都使用直板铁。接着, 只在发尾使用卷棒向内卷1圈

2 在全头施放X-Tenso®中和剂后, 将区部B划分为3个小区部

用不小过26毫米的卷杠向内卷至离发根1-2寸之间

区部B1使用2个卷杠, B2用3个, B3则2个

3 在区部A用卷杠呈45度向内卷至接近发根

塑造柔顺发型, 营造完美轮廓!